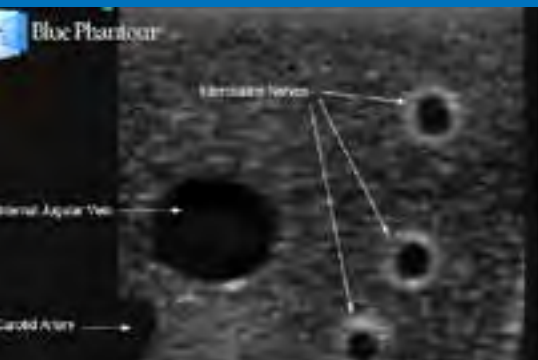


CAE Blue Phantom Regional Anesthesia and Ultrasound Central Line Training Model

Realistic and resilient ultrasound training models

CAE Healthcare's Blue Phantom ultrasound training phantoms are built with realism and durability so you can count on their lifespan. The Blue Phantom trainers support at least 20 medical specialties including central line insertion, breast biopsy, and transvaginal ultrasound exams. CAE's realistic ultrasound training phantoms realistically replicate human tissue in every way. Built with a patented self-sealing Simulex™ tissue, the training models image like real tissue using any clinical ultrasound system and cannulate like real tissue to support hands-on training. All training models, except Endovaginal and FAST, are available in a transparent configuration, upon customer request.

Regional Anesthesia and Ultrasound Central Line Training Model



- Next generation upper torso ultrasound central line and regional anesthesia manikin
- The most realistic and durable central venous catheter and nerve block ultrasound training model available anywhere
- Extremely realistic external and internal anatomy for ultrasound guided or blind insertion training
- Anatomically correct; cast from a live patient and constructed from a digital human file
- Regional anesthesia anatomy includes: supraclavicular nerves, interscalene nerves, infraclavicular nerves and enhanced access of the posterior interscalene nerve block approach
- The brachial plexus can be injected with simulated anesthetics to verify needle tip location and to practice the entire anesthesia procedure
- Injected simulated anesthetics are expelled allowing for repeated use
- Venous anatomy includes: internal jugular vein (IJ), brachiocephalic vein, subclavian vein and axillary vein
- Arterial anatomy includes: carotid artery, subclavian artery and axillary artery
- Simulated superior vena cava, right atrium and right ventricle allows clinicians to fully thread guidewires and catheters without resistance
- Internal landmarks for superior realism include the trachea, manubrium and clavicle
- Veins are compressible using mild pressure while the arteries remain uncompressed
- Excellent for training clinicians in the psychomotor skills associated with ultrasound guided central line placement training
- Teach, learn and practice on an extremely realistic model rather than a live patient, reducing overall risk
- Superb imaging characteristics optimize your training; simulated tissue matches the acoustic properties of real human tissue
- Arterial pulsations simulated using provided hand bulb or optional integrated automated pumping system
- Positive fluid flow in the vessels; model is prefilled with red fluid in the arteries and blue fluid in the veins
- Easy to refill using QuickFill™ Tubes
- Self-healing tissue offers users tremendous durability - minimizing the need for replacement parts and providing a low cost of ownership
- For use with any ultrasound system, no computer simulation or software necessary
- Excellent imaging quality using any ultrasound system
- Practice using ultrasound system controls
- No special storage needs
- Patented technology
- Purchase includes 2 bottles of simulated blood refill solution; one red (arterial), one blue (venous) 235mls bottles
- Soft storage case available for purchase (BPH662-A)
- Size 21.5" x 22.5" x 9" (55cm x 57cm x 23cm) (W x H x D)
- Weight 28 lbs. (hand pump) (12.7kg), 32 lbs. (auto pump) (14.5kg)
- Auto pump model utilizes low voltage universal power supply
- Made in USA