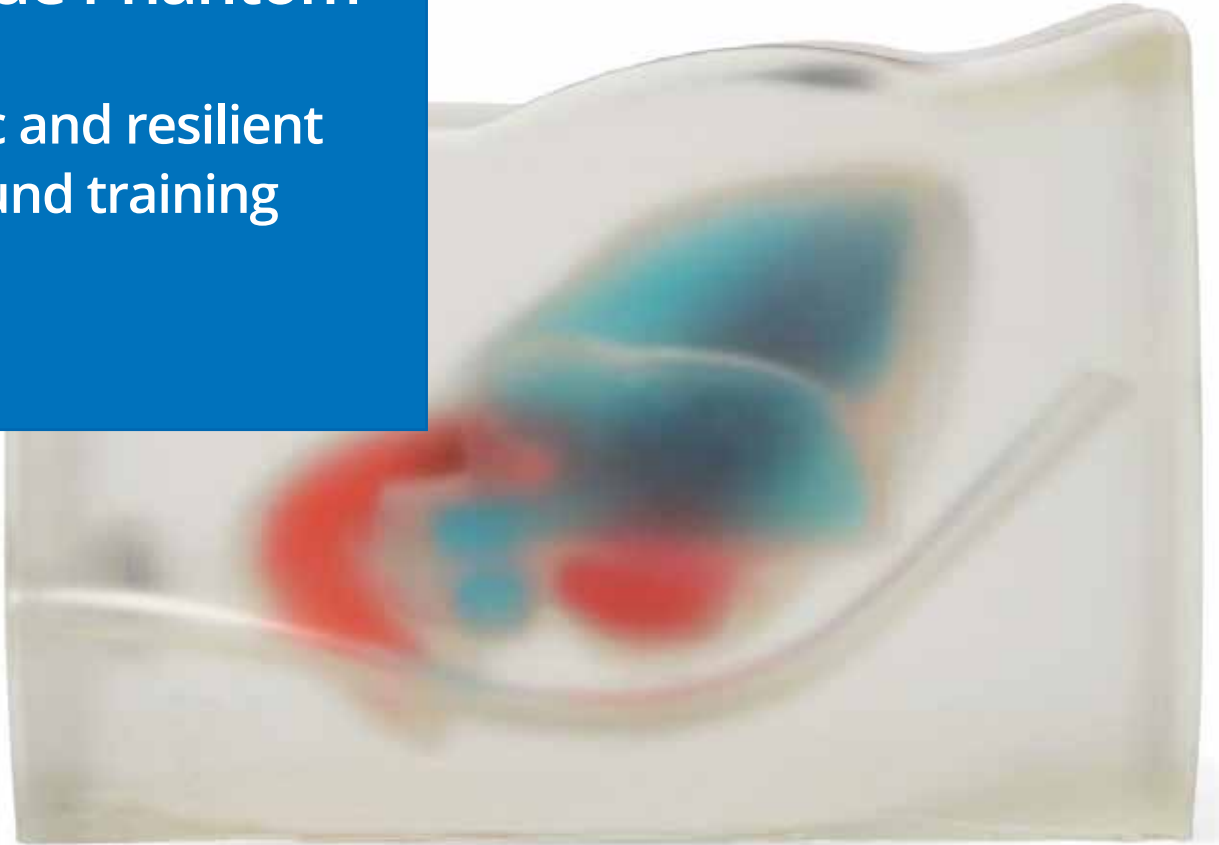


CAE Blue Phantom

Realistic and resilient
ultrasound training
models



Blue Phantom Cardiac Echo Ultrasound Training Model

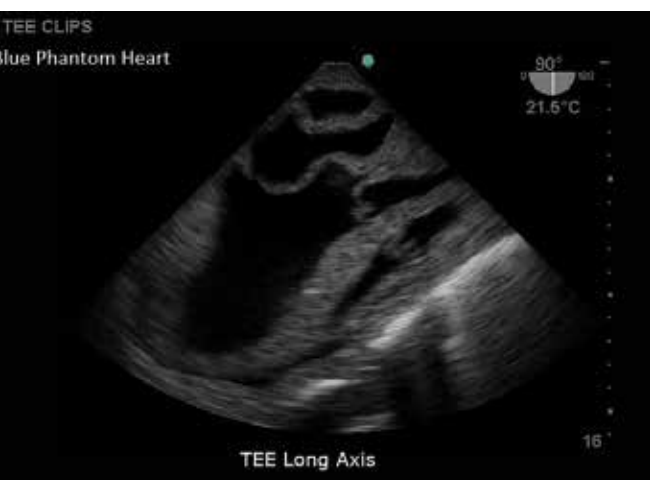
Blue Phantom's TTE/TEE cardiac ultrasound training model allows users to develop and practice ultrasound imaging skills such as transesophageal echo, transthoracic echocardiography, and ultrasound guided pericardiocentesis. These skills include; using ultrasound system controls, transducer insertion & placement, probe positioning and movement, applying proper transducer pressure to obtain images, recognition of the cardiac structures, guiding needles and catheters to the pericardial space for pericardiocentesis training. This portable, light weight heart model offers an extremely realistic echocardiography training platform as you utilize your own ultrasound system for simulation training.

This ultrasound simulation model is excellent for cardiology, anesthesiology, emergency medicine, ultrasound training programs, simulation centers, surgical skills centers, medical education facilities, and ultrasound manufacturers for ultrasound education and demonstrations.

Blue Phantom Cardiac Ultrasound Model for: TTE, TEE and Pericardiocentesis



- Heart anatomy contains left and right ventricle, left and right atria, mitral valve, tricuspid valve, aortic valve, pulmonic valve, left atrial appendage, pulmonary arteries, pulmonary veins, Pericardium, ascending aorta, SVC, and IVC for extremely realistic imaging
- Obtain images from all appropriate imaging positions including transesophageal and transthoracic imaging windows
- Excellent for 2-D, 3-D, and 4-D training
- Train clinicians to develop and practice cardiac ultrasound TEE and TTE echocardiography exams and pericardiocentesis procedures
- Extremely durable; use for repeated training without the high cost of replacing disposable parts
- Extracted fluid is easily replaced using a quick fill port or continuous filling using a luer lock
- Uncompromising image quality allows you to teach using sonographically accurate models
- Available in transparent and flesh tone configurations
- Self-healing simulated tissue allows for repeated procedural training without fluid leakage while utilizing 18 - 21 gauge needles and corresponding catheters.
- Contains anatomical landmarks for the most realistic simulation training
- Practice using ultrasound system controls
- High quality, proven technology
- Patented technology
- Purchase includes 1 bottle of Clear Refill Fluid (250 mls)
- Cover and Platform included for Storage
- Weight 13 pounds
- Dimensions: 11 x 8 x 66 (L x H x W inches)
- Made in USA



To Order Call:

AEDSuperstore®
World's Largest Automated External Defibrillator Source

800.544.0048
help@aed.com

www.AEDSuperstore.com
1800 US Hwy 51 N | Woodruff, WI 54568

