

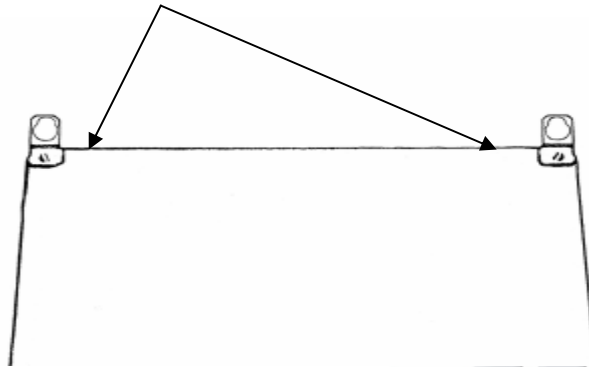


Alert Plus Outdoor All-Weather Heated AED Cabinet w/Alarm & Voice Prompts

Defibrillator Cabinet Instructions

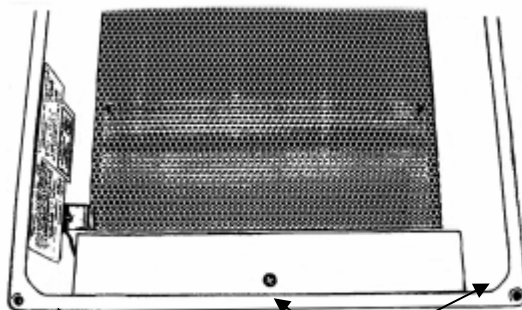
Cabinet Mounting: Attach four brackets (included) to the back of the cabinet by screwing the supplied 10-32 machine screws into the threaded bushings. See illustration - two of the four brackets shown.

Attach brackets at these locations (top two shown)



Attach cabinet to wall or other structure using appropriate fasteners through the brackets. Attachment location must be able to support a minimum of 25 lbs.

Optional Cabinet heater wiring: if the cabinet has the optional heater, a qualified electrician must wire it according to NEC guidelines and local codes. The 120 VAC heater wires are accessed by removing the bottom shelf. The black and white wires are the hot and neutral wires, and must be connected to a power source capable of 360VA minimum on a 120VAC line source. This is done by removing the screw in the front/center of the shelf and then loosening but not removing the two screws on either side of the shelf. The shelf can then be lifted up for removal. A grounding wire is attached to the shelf. The shelf can be set to the side without removing this wire in order to complete the wiring. An appropriate hole must be drilled in the bottom of the cabinet for wire entry. **DO NOT** drill a hole in the back, front, sides or top of cabinet. After completion of wiring replace the shelf and reattach and tighten screws.

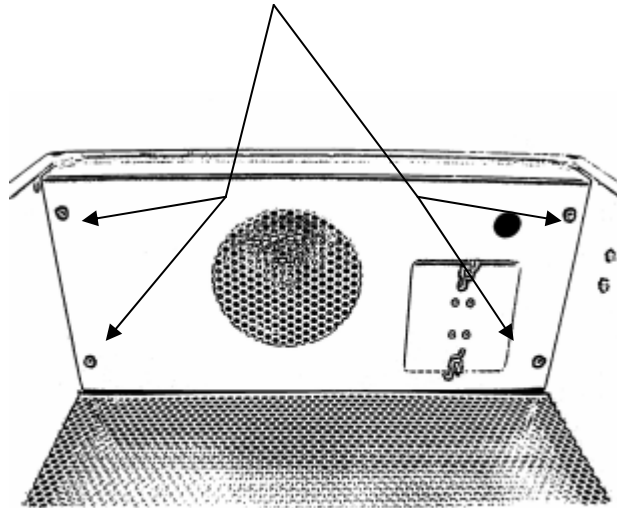


Remove this screw

Loosen these two screws (at rear of cabinet)

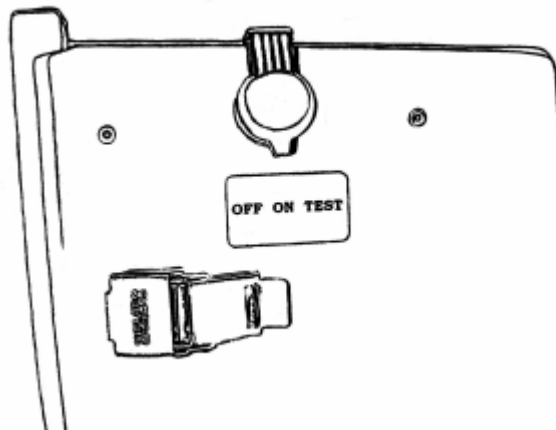
Optional Alarm connection: The cabinet can be wired into an existing alarm by means of the normally open and normally closed contacts on the circuit board. In order to connect to these terminals the upper electronic enclosure must be removed by removing the four screws.

Remove these four screws to access circuit board

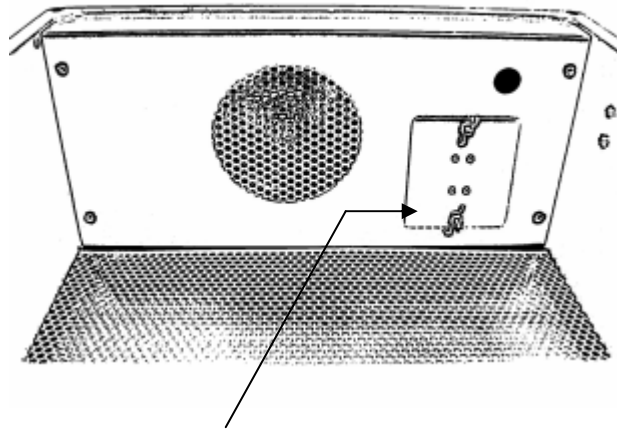


The enclosure can then be dropped down and alarm wires attached to the appropriate terminals on the circuit board. A wire exit hole will have to be drilled in the back of the enclosure. This should be sealed with RTV before replacing the electronic enclosure. When the door is opened in the ON mode the relay is actuated sending the alarm signal. To reset the alarm turn the key switch to the OFF position for 5 seconds and then return it to the ON position with the door closed.

Cabinet operation: The three-position key switch on the side of the unit controls power to the alarm. The three positions are OFF - ON - TEST. The ON position is the normal position of the switch. In this position the alarm will sound followed by the voice prompt when the door is opened. This is repeated twice and then the alarm chirps periodically to indicate that the door has been opened. To reset the cabinet turn the key switch to the OFF position for 5 seconds and then return it to the ON position with the door closed. The TEST position allows testing the alarm function without sending an alarm signal (if connected).

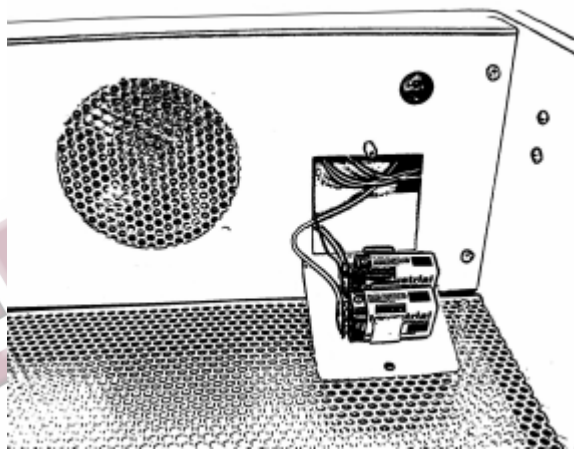


Battery replacement: The alarm is powered by two 9-volt alkaline batteries. When the batteries are near end-of-life the alarm will chirp periodically to let you know they need to be changed. To replace the batteries, remove the two wing nuts on the electronics enclosure.



Remove these two wing-nuts

The battery door can then be removed along with the batteries. After replacing the batteries, reattach the door with the wing nuts. Always replace both batteries and use only alkaline-type batteries for replacement.



Cabinet Heater Operational Description: The optional heater maintains the internal cabinet temperature above freezing, down to temperatures as low as -25°F . A bimetallic temperature sensor closes to energize the heater when the cabinet temperature drops to $40^{\circ}\text{F} \pm 5^{\circ}\text{F}$. The sensor turns the heater off when the internal cabinet temperature reaches $60^{\circ}\text{F} \pm 5^{\circ}\text{F}$. All heaters and temperature sensors are fully tested for proper operation. There is no visual indication of heater operation.

The key switch located on the side of the unit controls only the alarm and voice prompt and has no control over heater operation.

Distributed By
Allied 100, LLC | 1800 US Hwy 51 N | Woodruff, WI 54568-9558
Phone: 715-358-2329 | Fax: 888-364-2377 | Call Toll Free: 800-544-0048